



THE NOWAK SOCIETY

EMERGENCE

A PSYCHEDELIC EDUCATION FESTIVAL

October 1st • Saturday • 12:00 pm to 5:00 PM
ReelWorks, 1399 35th Street, Denver, CO 80205



COMMUNITY CONVERSATIONS

Speaker Schedule

12:00-12:30pm

JULIAN BOST

PsychedelicsToday

Modern Pain Science and
Psychedelics

12:35-1:05pm

BARINE MAJEWSKA, JD

JOSHUA KAPPEL, JD

Vicente Sederberg, LLP

The (Legal) Future of
Psychedelics in Colorado

1:15-1:45pm

DORI LEWIS, MA, LPC, LMHC

Reflective Healing

Power in Psychedelic Spaces:
Ethics and Avoiding Harm

1:50-2:20pm

KATHRYN TUCKER, JD

National Psychedelics Association

Advocating for Access:
Psychedelic Assisted Therapy
for Those Facing Life
Threatening Conditions

2:30-3:00pm

MATTHEW DUFFY &

SOVEREIGN OSHUMARE

**Society for Psychedelic Outreach,
Reform, & Education**

Creating Our Collective Set and
Setting: The Role Of Community and
Culture Building With Psychedelics

3:05-3:50pm *keynote*

VICTOR CABRAL, MSW

Sponsored by **Naropa University**
Storytelling for Psychedelic Liberation:
Equity, Access, and Racial Healing

3:55-4:25pm

RAFAEL LOPEZ, TAPM &

ISKON RAWA, TAPM

Mama Abuela's, Centro Espiritual

The Divine Mother: Healing the
Planet through Healing the Bodies

4:30-5:00pm

WILL VAN DERVEER, MD &

SCOTT SHANNON, MD

**Integrative Psychiatry Institute &
Psychedelic Research and Training
Institute**

A New Career Path: Training and
Certification in Psychedelic Medicine

INTEGRATION STATION

Schedule

12:15-1:00pm

TRIP SITTING FOR NON-PROFESSIONALS

Effective Connection

Gabriel DeRita

www.effectiveconnection.com



1:15-2:00pm

OPEN 12-STEP MEETING

Psychedelics in Recovery

Members of Denver Chapter

psychedelicsinrecovery.org



2:15-3:00pm

SOMA + PSYCHE: EMBODY YOUR LIVING MYTHOLOGY

The Luminous Guide

Nicole Lilly

theluminousguide.com

www.nicolelilly.com



3:15-4:00pm

KETAMINE-ASSISTED PSYCHOTHERAPY: CONSULTATION GROUP FOR PRACTITIONERS

Reflective Healing

Dori Lewis, LPC

www.reflectivehealing.com



4:15-5:00pm

SIMPLE ART INTEGRATION: DRAWING YOUR PSYCHEDELIC EXPERIENCE

Awakening Peace Counseling

Katie Klumb, LPC





ASK AN EXPERT

Schedule

12:00-1:00pm

Brent Jaster, MD. Ask a Physician/Prescriber, Heartmind Medicine

Katharine Sawyer. Ask a Spiritual Healer/Professional Coach, Ignite You Life Coaching

Aaron Deterding. Ask a Veteran & Doctoral student in Traditional Chinese Medicine, Heroic Hearts Project

Tracey Tee. Ask a "Mom on Mushrooms"

1:00-2:00pm

German Ascani, MD. Ask a Medical Professional, Evolve Mind Wellness

Dr. Sara Lewis. Ask a Psychedelic Training Program, Naropa University

Eric Bellis. Ask a Recovery Coach

Mark Cunningham, MFT. Ask a Veteran/Sex Therapist & Psychedelic Therapist, Adaptive Therapy

2:00-3:00pm

Barine Majewska, JD and Joshua Kappel, JD. Ask an Attorney, Vicente Sederberg, LLP

Ashley Ryan, MS. Ask a Sex & Psychedelics Coach, The Naughty Professor

Gabe DeRita. Ask an Integration Coach, Effective Connection

Vanessa Cruz. Ask a Death Doula / Psychedelic Harm Reductionist

3:00-4:00pm

Dawn Fabian, PMHNP-BC. Ask a Medical Professional, Integrative Psychiatric Services

Travis Tyler Fluck. Ask a Mushroom Guy

Kevin Franciotti, MA, LAC. Ask a Licensed Addiction Counselor about tripping while "sober"

Rev. Dr. Nicole Oliver Snyder. Ask a Clergy person

4:00-5:00pm

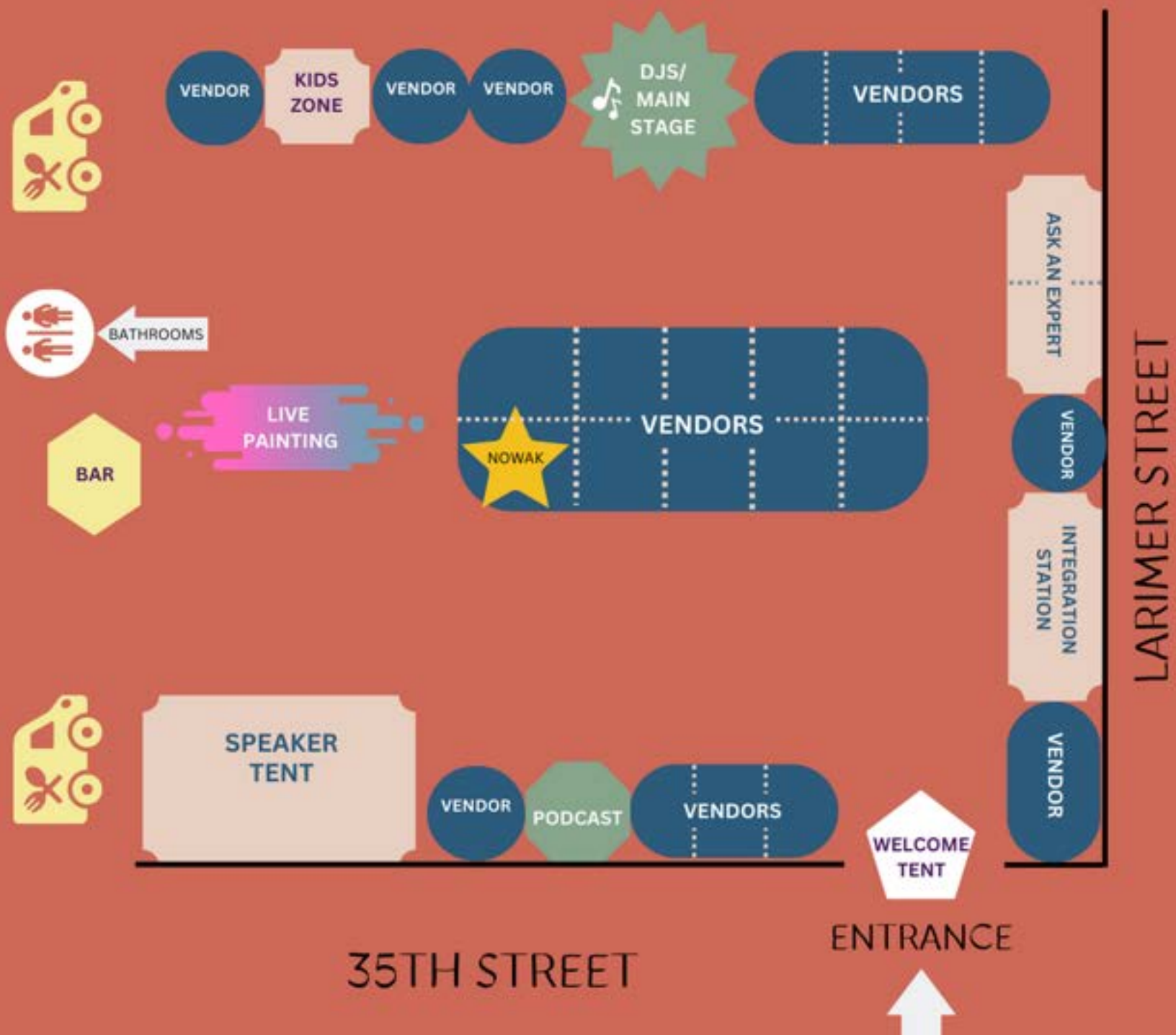
Yaicha Bryan PA. Ask a Medical Professional and Reiki Master

Kristen Diegler-Woodring. Ask an End of Life Doula

Bridgette Mars. Ask an End of Life Doula

Seraphim Schwab MA, M.Div Candidate. Ask a Veteran/Therapist/Seminarian

EMERGENCE Festival Map



EDUCATIONAL BOOTHS



REFLECTIVE HEALING



DANCESAFE



psychedelics
today



BIPOC
PSYCHEDELIC
SOCIETY



TRAINING PSYCHEDELIC
THERAPISTS



MCALLISTER
LAW OFFICE, P.C.
WISE COUNSEL. JUST RESULTS.

EDUCATIONAL BOOTHS



HEROIC
HEARTS
PROJECT

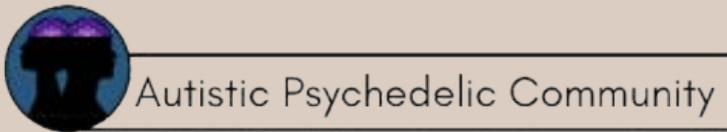


Brigitte Mars
herbalist, author, and natural food chef

Our Loves Journey
Kristen Diegler-Woodring



OTHER EDUCATIONAL & VENDOR BOOTHS



COMMUNITY CONVERSATIONS

Speaker Bios



Barine Majewska is counsel in Vicente Sederberg's Denver office, where she is a leading member of the firm's Entheogens and Emerging Therapies Practice Group. Barine's long-standing respect for psychedelics and plant medicine work led her to a fantastic opportunity earlier in her career to intern in psilocybin studies at the Johns Hopkins School of Medicine. Her firsthand experience working as both a research assistant and guide in psilocybin sessions at Johns Hopkins gave her clear insights into the potency, benefits, and pitfalls of psychedelic work. In 2016, Barine returned to law and joined VS. Barine applies VS's pioneering spirit in the cannabis industry to fostering the effective, safe and legal use of psilocybin, ketamine, MDMA and other entheogens. She is fascinated by the ethical, cultural, spiritual, psychological, and commercial challenges and opportunities presented by this emerging industry. Barine has deep interests in meditation, biohacking and the many types of altered states of consciousness accessed throughout human history via different technologies. She holds an undergraduate degree in physics, and is fluent in Turkish.



Dori Lewis, LPC owns and operates Reflective Healing (RH) in Fort Collins, CO, a psychotherapy group practice that specializes in psychedelic therapy using ketamine, integration therapy and transpersonal psychotherapy. RH operates from a feminist/collectivist model in an attempt to break-away from a traditional private practice/business model (top-down and triangular in terms of the power structure). Dori also creates and teaches psychedelic facilitator trainings with her colleagues at An Enduring Love, and provides supervision and mentorship to other providers interested in psychedelic work. She publicly speaks on topics such as ethics, access and power in psychedelic spaces, diversity, equity and inclusion in the psychedelic psychotherapy space and cultural appropriation as it relates to ritual and ceremony. In her personal life, Dori has been using psychedelics for spiritual and existential exploration for nearly two decades. She has been exposed to both the light and dark of the psychic landscape and has sat with teacher plants in traditional medicine spaces, medicinal substances in therapeutic spaces, and recreational drugs in social spaces.



Duffy is an ecofuturist organizer, myco-poet, and a Tauresian teamplayer. Leaning on his background in ecological design and community organizing, he teamed with Decriminalize Denver as a sporeganizer for the Denver Psilocybin Initiative in November, 2018. After the success of that historic campaign, Duffy went on to co-found SPORE and enroll in the Resilient Leadership MA at Naropa University to receive the education he needed to best serve the emerging psychedelic ecosystem. He completed his master's degree in May 2021. He believes solidarity is where sovereignty and interdependence meet and dreams of a psychedelic movement committed to restoring relations, collective healing, and beloved community.

COMMUNITY CONVERSATIONS

Speaker Bios



Iskón Rawa. I am a Wisdom Keeper of my lineages and traditions. My formal training is in the field of education and sociology. Currently my practice focuses on mastering the teachings of Toltec Shamanism and walking the path of Traditional Amazonian Plant Medicine. In addition, study Jungian Analysis to increase my own understanding of society and mental health.



Jamie Beachy PhD, MDiv, is assistant faculty in Wisdom Traditions and co-director of Naropa University's Center for Psychedelic Studies. Jamie is an ordained christian minister and buddhist practitioner committed to earth-based and contemplative approaches to professional spiritual care. After completing her clinical chaplaincy training at the University of Washington Medical Center, Jamie served as a chaplain, ACPE educator, and ethics consultant in hospice, palliative care, and trauma contexts in Washington and Colorado. Jamie is certified as a teacher of Cognitively-based Compassion Training through Emory University's Center for Contemplative Science and Compassion Based Ethics, and currently serves as a therapist with the MAPS MDMA-assisted therapy study site in Boulder, Colorado. Jamie aspires to work with the plant elders to help heal the relationship between humans and the rest of the natural world.



Julian Bost (Mexican, he/him) researches the potential to treat chronic pain through the combination of psychedelics and modern pain science. Originally an economist, he has studied cognitive psychology, various chronic pain conditions, and human anatomy for over 7 years, and has over 14 years of experience in resolving his own pain & injury as a lifelong athlete. A former chronic pain patient himself and a research consultant for REMAP Therapeutics, he is dedicated to further investigation of successful self-treatment methods and pain prevention measures using psychedelics and novel physical rehabilitation protocols. Julian also moderated REMAP's first two "Psychedelics and Pain" Symposiums featuring some of the top chronic pain researchers in the world. He is a passionate clinical science advocate, a low back devotee, and has personally been injured, and healed from injury, over 50 times with no residual pain or disability.

COMMUNITY CONVERSATIONS

Speaker Bios



Kathryn L. Tucker, JD. is Director of Advocacy for the National Psychedelics Association (NPA). Ms Tucker comes to NPA with 30 years of experience in developing bold multidimensional advocacy strategies to advance social change. Her work in recent years has focused on advocacy to open access to psychedelic substances in particular for patients facing life threatening conditions. She developed and leads the effort to compel DEA to open access to promising investigational psychedelic drugs (psilocybin and MDMA) pursuant to state and federal Right to Try laws. This includes federal court litigation, *AIMS et al v DEA*, prompting the introduction of the first bipartisan bicameral bill introduced in the US Congress that would ensure access to eligible psychedelic drugs, the Right to Try Clarification Act. Tucker is a founding member of the Psychedelic Bar Association and Co-Chairs its Litigation and Advocacy Committee. She is a Founding Member of the Initiative on Psychedelics and Healing of the Global Wellness Institute.



Rafael López M.A. TAPM, is a curandero/maestro in the field of Traditional Amazonian Plant Medicine. He began working with plant spirit-medicine 30 years ago and has been working as a ceremonialist in the lineage of Shipibo medicine since 2009. Originally from Buenos Aires Argentina, Rafa currently lives in the United States where he works during the day screening and preparing prospective travellers who plan to attend a Traditional Amazonian Plant Medicine healing center in Peru. On a typical day, he enjoys hiking with his partner and their dog.



Scott Shannon, MD has been a student of consciousness since his honor's thesis on that topic at the University of Arizona in the 1970s. Following medical school, MDMA assisted psychotherapy became part of his practice before this medicine was scheduled. Scott has published four books on holistic and integrative mental health. Scott is a past President of two national medical organizations and currently teaches ketamine-assisted psychotherapy for PRATI. He serves as a site Principal Investigator for the Phase III trial of MDMA assisted psychotherapy for PTSD in Fort Collins. Scott is the CEO for the Board of Psychedelic Medicine and Therapies.

COMMUNITY CONVERSATIONS

Speaker Bios



Sovereign Oshumare serves as catalyst, curator, educator, and alchemist of systemic change. As the Founder and Co-Creator of ALKEMI Consulting and Development, Sovereign collaborates with individuals, organizations and movements, through the transmutation of cultural, interpersonal, contextual, and ecological design, specializing in the psychedelic space. Sovereign is also the founder of XRYSLIS and co-founder of Shelterwood Collective. XRYSLIS is a retreat created to activate, empower, and heal LGBTQ People of Global Majority through the cultivation of community infrastructure. Shelterwood Collective is a 900 acre ecovillage and retreat center led by LGBTQ Black and Indigenous people for the building, healing, and restoration of land and people. Sovereign is interested in psychedelics as a catalyst for transformation and believe that the work to make the world a better place is a shared responsibility, and we cannot expect others to fight for our liberation without fighting for theirs.



Victor Cabral is a collaborative and strategic leader who is making an impact on historical inequalities in his community and across the United States. Victor serves as the Director of Policy and Regulatory Affairs for Fluence International Inc., a company that provides evidence-based training in psychedelic therapy and integration services to clinicians across the globe. Before joining Fluence, Victor served as Deputy Director for the Pennsylvania Governor's Office of Advocacy and Reform where he co-led the implementation of the Trauma-Informed PA Plan, helped establish the first Racial Day of Healing in Pennsylvania history, and developed free trauma trainings for Pennsylvanians in collaboration with internationally recognized experts. He has expertise in policy and advocacy, BIPOC mental health, racial and communal trauma, and psychedelic medicine. He is a Licensed Social Worker and practicing psychotherapist in Pennsylvania with training in Internal Family Systems, Psychedelic-Assisted Psychotherapy and Psychedelic Integration.



Will Van Derveer, MD is a leader in the adoption of integrative psychiatry practices globally. After discovering that his conventional psychiatric training was inadequate to answer many of the challenges facing his patients, Dr. Van Derveer began to learn how to resolve the root causes of common psychiatric problems such as depression, anxiety, and insomnia. Dr. Van Derveer has published research on MDMA-assisted psychotherapy for PTSD and written book chapters in the fields of ketamine-assisted psychotherapy and other clinical applications of psychedelic compounds. In addition to traditional medical training, he is a meditation instructor and has trained in shamanism, EMDR, somatic experiencing, internal family systems, cognitive behavioral therapy, and hypnosis. He oversees clinic treatments which often include addressing imbalances from a variety of different perspectives, from the ground up. In addition to his supervision work at the clinic, he is co-founder of the Integrative Psychiatry Institute where hundreds of psychiatrists are learning how to bring these tools into their own practices.

Emergence was made possible thanks to the support of our generous sponsors



psychedelics
today



DANCESAFE



REFLECTIVE HEALING



BIPOC
PSYCHEDELIC
SOCIETY



INTEGRATIVE
PSYCHIATRY
INSTITUTE

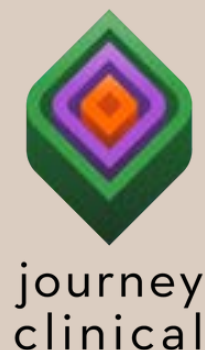
TRAINING PSYCHEDELIC
THERAPISTS



MAPS
MULTIDISCIPLINARY ASSOCIATION
FOR PSYCHEDELIC STUDIES

VICENTE
SEDERBERG
LLP

Thank you to our additional sponsors!



Thank you to our volunteers!

AARON DETERDING
ALEX AT WHOLESOMETHERAPIES.COM
ALEX WILLEN
ALLIE QUADE COUNSELING
ANDREW REYNOLDS
ANNE ARNDT
ANYA ROTH
ASHLEY RYAN,
THENAUGHTYPROFESSOR.COM
BARINE MAJEWSKA
BRENT JASTER
BRITTANY SPOOLSTRA
CAROLINE OFENSTEIN
CAROLINE S. CONZELMAN,
CANNAPSYCHSYMP.COM
CAROLINE DENISON
CAT MARIA
CHANTAL VAREY
CLARISSA LEE
COREY HOLLISTER
DANIELLE RIFKIN
DAWN FABIAN
DONALD HARRISON
DORI LEWIS
ELENA DAVIS
ELIZABETH OATZ
ERIC BELLIS
GABRIEL DERITA
GERMAN ASCANI
GREGG BROCK, GREGGBROCK.COM
HANNAH LACERTE
JEN CAINES
JENA MCGARRAHAN
JJ TROUT
KATHARINE SAWYER

KEEGHAN ALEXANDER
KEITH SPENCE
KELI YERGER, SOULFUL RELATIONSHIPS
PSYCHOTHERAPY
KELLY QUINN
KEVIN FRANCIOTTI
KRISTEN DIEGLER-WOODRING, OUR
LOVES JOURNEY
KURT LEINBACH
LANDON MILLSAP
LISA LARSON
MARK CUNNINGHAM
MAXIME ZAHRA
MELANIE ROSE RODGERS,
INFLUENTIALX.COM
MONERA MASON
NICOLE LILLY, THELUMINOUSGUIDE.COM
PAM PETERS,
PAMELAPETERSTHERAPY.COM
PRISCILLA SOLIS
REBECCA BARRY
REILLY CAPPS
REV. DR. NICOLE OLIVER SNYDER
RIVKAH STANDIG, EMBRACEMAGIC.COM
ROBERT WELBORN
SAM WOGAN
SARAH GARDNER
SEAN LAWLOR
SERAPHIM SCHWAB,
THEPSYCHEDELICTHERAPIST.ORG
SIZER YERGER
TRACY COBB, TLCLPC.COM
TRAVIS TYLER FLUCK
VALERIE CATTANY
VANESSA CRUZ
VERONICA LIGHTNING HORSE,
LHTHEHEALINGGROUND.COM
YAICHA BRYAN

Nowak Society Board Members



Dylan Rivard, MA, LPC
Chair of the Board
dylan@nowaksociety.org



Rob Colbert, MA, PhD, LPC
Treasurer of the Board
rob@nowaksociety.org



Bri Bendixsen, MA
Emergence Festival,
Co-Organizer
brianna@nowaksociety.org



Stephen Thomas, MSW
Secretary of the Board
stephen@nowaksociety.org



Shannon Hughes, MSW, PhD
Emergence Festival,
Co-Organizer
shannon@nowaksociety.org



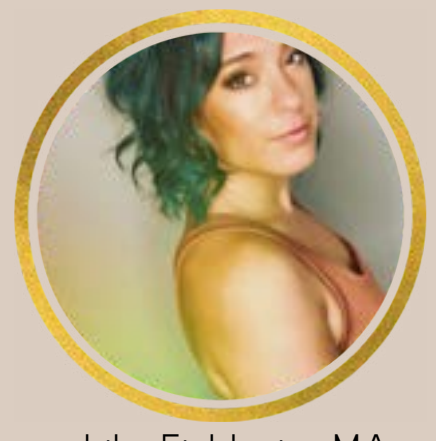
Nathan Bloodsworth
nathan@nowaksociety.org



Lucia Terpak, MA
lucia@nowaksociety.org



Katie Klumb, MA
katie@nowaksociety.org



Lilo Fishbein, MA
lilo@nowaksociety.org



THE NOWAK SOCIETY

Thank You For Your Support!

Emergence is hosted by the Nowak Society, a community-led drug education and professional networking nonprofit. Run by academics, therapists and guides, they've hosted the Psychedelic Professionals meetups across Northern Colorado for more than four years.

The Nowak Society makes its education and outreach accessible to all, offering information and skill sets as open source, belonging to everyone, and held in the community. Its mission is to connect and organize psychedelic communities and give voice to the essential values and pressing issues of the psychedelic movement.

The Nowak Society needs YOUR help to continue its mission. If you're enjoying Emergence, please consider donating to the Nowak Society so that it can continue its efforts to promote psychedelic education, build communities, and give voice to what's essential for the movement in Colorado.



PayPal
@nowaksociety



venmo
@Nowak-Society



www.thenowaksociety.org



info@nowaksociety.org



Find all our socials
and more on LinkTree
linktr.ee/thenowaksociety

And finally, TONIGHT....Come afterparty with us to the hottest House and Techno grooves!



THE NOWAK SOCIETY &
BOOGIE GROOVE
ENTERTAINMENT PRESENT

Official Emergence Festival Afterparty

FEATURING DJS:
J.VETRANO
ST FREQUENCY
GEORGE MICHAEL

SAT. OCTOBER 1

8 PM TO 2 AM

Your Mom's House
608 E. 13th Ave.



**YOUR
MOM'S
HOUSE**

events.yourmomshousedenver.com/